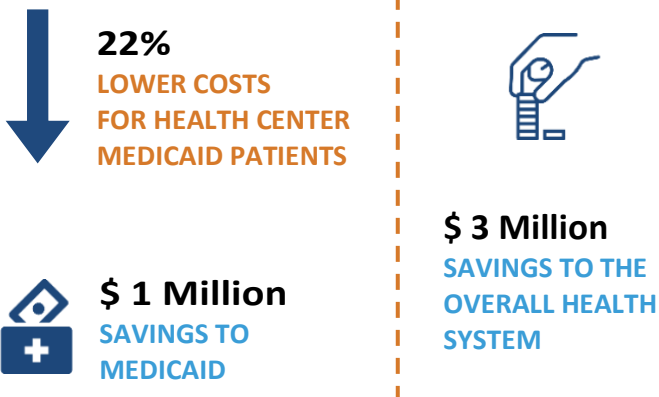


The Value and Impact of Lana'I Community Health Center

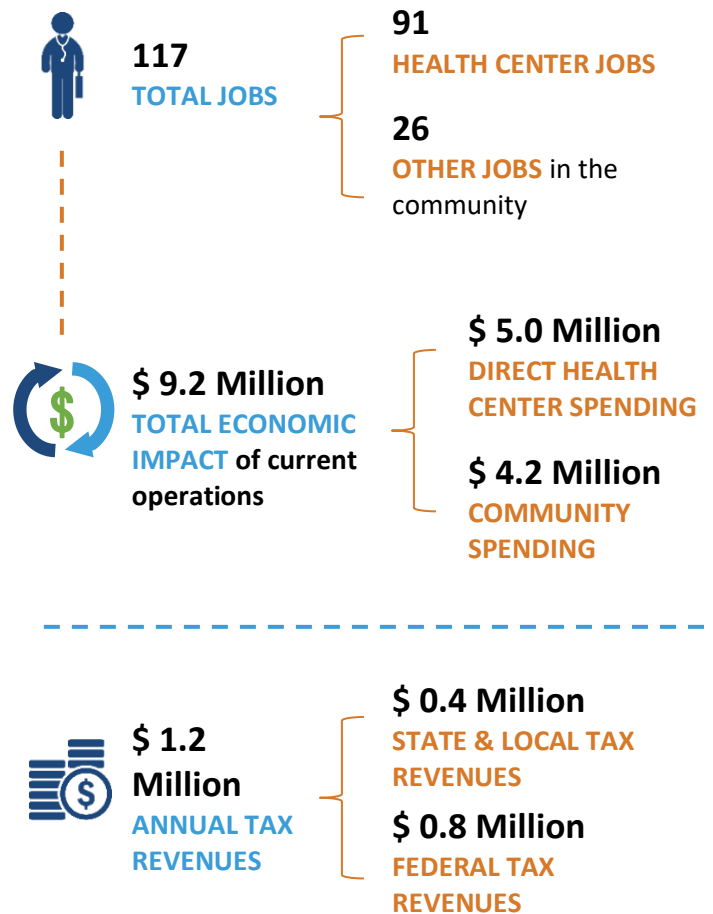
Health centers provide tremendous value and impact to the communities they serve, including **JOBS** and **ECONOMIC STIMULUS, SAVINGS** to Medicaid, and **ACCESS** to care for vulnerable populations.

This report highlights the Lana'I Community Health Center **2019 contributions and savings**.

SAVINGS TO THE SYSTEM



ECONOMIC STIMULUS



CARE FOR VULNERABLE POPULATIONS



Capital Link prepared this Value & Impact report using 2019 health center audited financial statements and Uniform Data System information. Economic impact was measured using 2018 IMPLAN Online.

REFERENCES AND DATA SOURCES

- Savings to the System: Nocon et al. *Health Care Use and Spending for Medicaid Enrollees in Federally Qualified Health Centers Versus Other Primary Care Settings*. American Journal of Public Health: November 2016, Vol. 106, No. 11, pp. 1981-1989.
- Economic Stimulus: Economic impact was measured using 2018 IMPLAN Online from IMPLAN Group LLC, IMPLAN System (data and software), 16905 Northcross Dr., Suite 120, Huntersville, NC 28078, www.IMPLAN.com. Learn more at www.caplink.org/how-economic-impact-is-measured.
- “Low Income” refers to those who earn below 200% of federal poverty guidelines.
- Care for Vulnerable Populations: Bureau of Primary Health Care, HRSA, DHHS, 2019 Uniform Data System.
- Full-Time Equivalent (FTE) of 1.0 is equivalent to one full-time employee. In an organization that has a 40-hour work week, an employee who works 20 hours per week (i.e., 50 percent of full time) is reported as “0.5 FTE.” FTE is also based on the number of months the employee works. An employee who works full time for four months out of the year would be reported as “0.33 FTE” (4 months/12 months).

SUMMARY OF 2019 ECONOMIC STIMULUS			
		Economic Impact	Employment (# of FTEs*)
Community Impact	Direct	\$4,962,735	91
	Indirect	\$1,395,167	9
	Induced	\$2,793,701	17
	Total	\$9,151,603	117

SUMMARY OF 2019 TAX REVENUE			
		Federal	State
Community Impact	Direct	\$541,120	\$168,175
	Indirect	\$95,534	\$64,143
	Induced	\$177,120	\$214,501
	Total	\$813,774	\$446,819
Total Tax Impact		\$1,260,593	

About Capital Link

Capital Link is a non-profit organization that has worked with hundreds of health centers and primary care associations for 25 years to plan for sustainability and growth, access capital, improve and optimize operations and financial management, and articulate value. We provide an extensive range of services, customized according to need, with the goal of strengthening health centers—financially and operationally—in a rapidly changing marketplace. Capital Link maintains a database of over 13,000 health center audited financial statements from 2005 to 2018, incorporating approximately 80% of all health centers nationally in any given year. This proprietary database is the only one of its kind as it exclusively contains health center information and enables us to provide information and insights tailored to the industry. For more information, visit us at www.caplink.org.